

## Project 1 Campo da calcio a 11



Partner for Contact:  
Order No.:  
Company:  
Customer No.:

Date: 02.06.2022  
Operator:

Operator  
Telephone  
Fax  
e-Mail

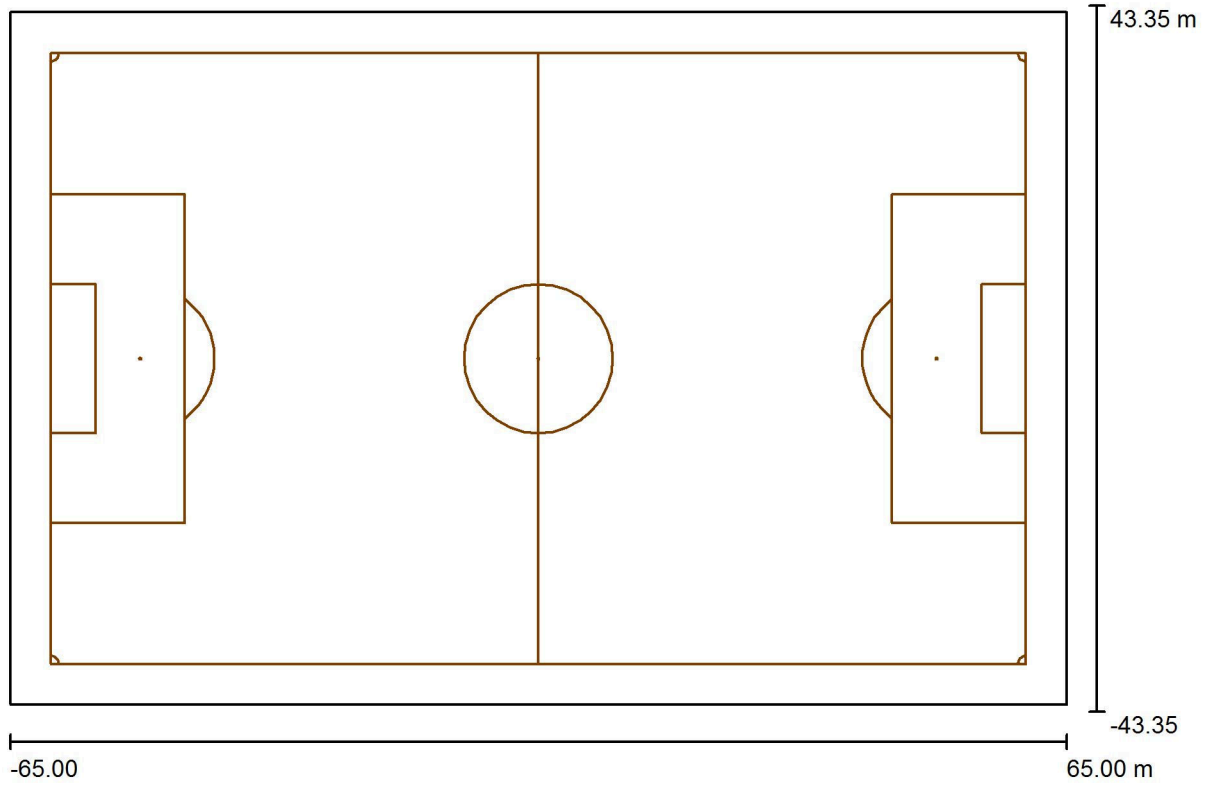
## Table of contents

<b>Project 1</b>	
Project Cover	1
Table of contents	2
<b>Exterior Scene 1</b>	
Planning data	3
Luminaire parts list	4
Luminaires (layout plan)	5
Pole Positions (Coordinates List)	6
Sport Luminaires (Coordinates List)	7
3D Rendering	9
False Color Rendering	10
<b>Exterior Surfaces</b>	
<b>Soccer Field 1 Calculation Grid (PA)</b>	
Summary	11
Isolines (E, Perpendicular)	12
Value Chart (E, Perpendicular)	13



Operator  
Telephone  
Fax  
e-Mail

**Exterior Scene 1 / Planning data**



Light loss factor: 0.80, ULR (Upward Light Ratio): 5.5%

Scale 1:930

**Luminaire Parts List**

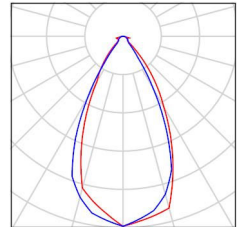
No.	Pieces	Designation (Correction Factor)	Φ (Luminaire) [lm]	Φ (Lamps) [lm]	P [W]
1	8	LEDiamoluce -TFL960W-3030-CW-60 (1.000)	140647	140690	953.8
2	16	LEDiamoluce -TFL960W-CW-20 (1.000)	148425	148430	959.6
Total:			3499980	Total: 3500400	22984.1

Operator  
Telephone  
Fax  
e-Mail

## Exterior Scene 1 / Luminaire parts list

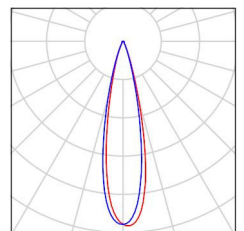
8 Pieces LEDiamoluce -TFL960W-3030-CW-60  
Article No.: -TFL960W-3030-CW-60  
Luminous flux (Luminaire): 140647 lm  
Luminous flux (Lamps): 140690 lm  
Luminaire Wattage: 953.8 W  
Luminaire classification according to CIE: 100  
CIE flux code: 87 93 99 100 100  
Fitting: 1 x 3030 (Correction Factor 1.000).

See our luminaire  
catalog for an image of  
the luminaire.



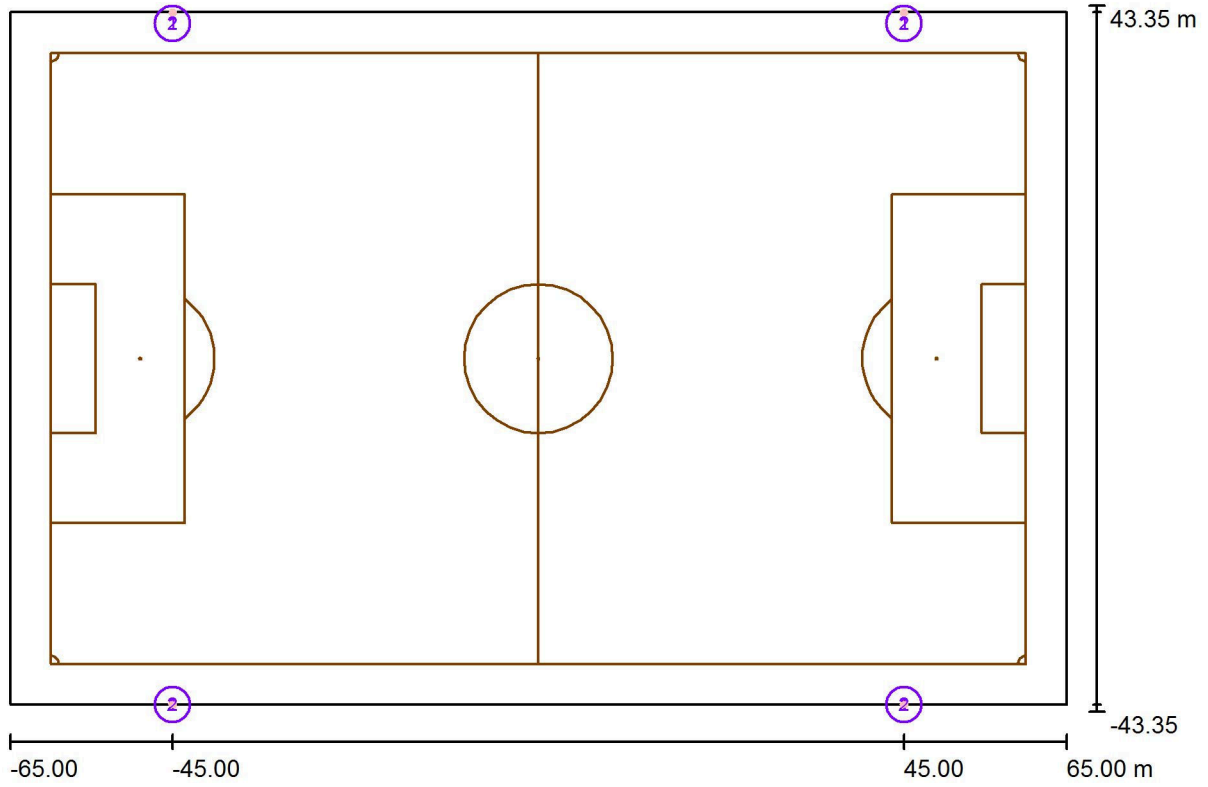
16 Pieces LEDiamoluce -TFL960W-CW-20  
Article No.: -TFL960W-CW-20  
Luminous flux (Luminaire): 148425 lm  
Luminous flux (Lamps): 148430 lm  
Luminaire Wattage: 959.6 W  
Luminaire classification according to CIE: 100  
CIE flux code: 89 95 98 100 100  
Fitting: 1 x 5050 (Correction Factor 1.000).

See our luminaire  
catalog for an image of  
the luminaire.



Operator  
Telephone  
Fax  
e-Mail

### Exterior Scene 1 / Luminaires (layout plan)



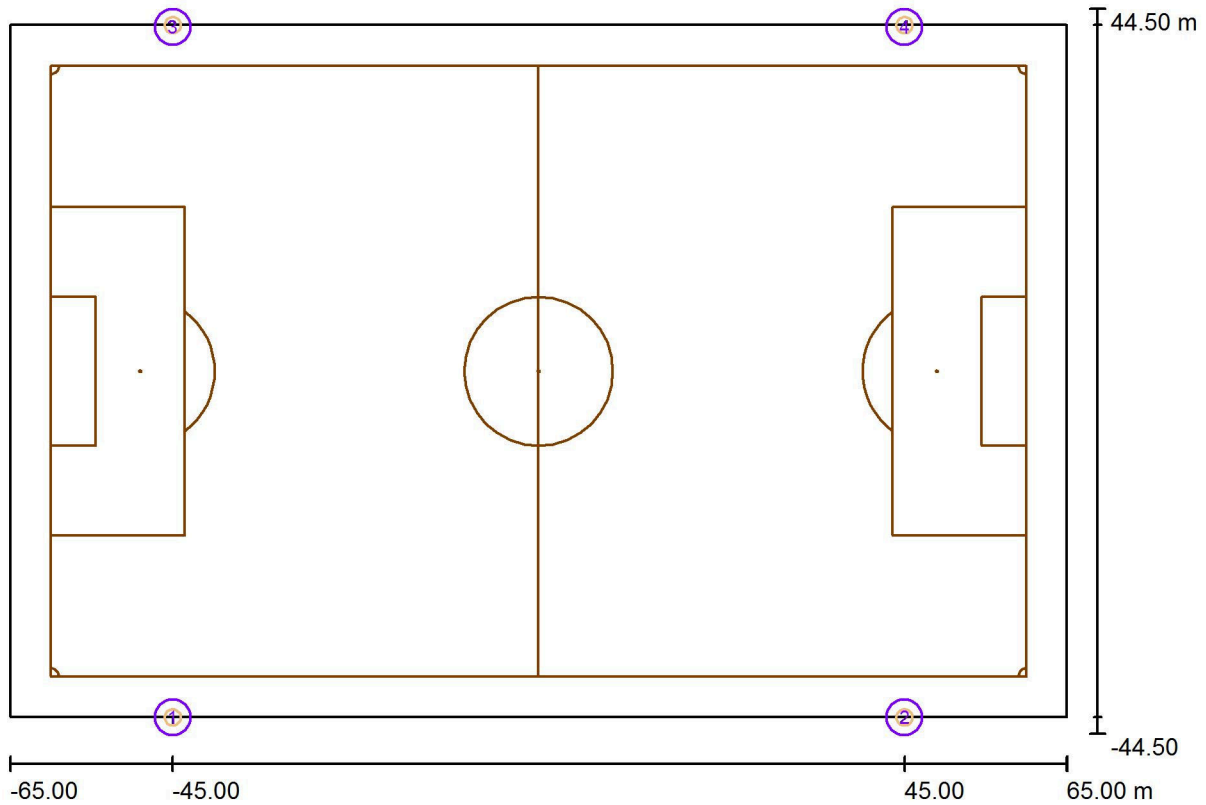
Scale 1 : 930

#### Luminaire Parts List

No.	Pieces	Designation
1	8	LEDiamoluce -TFL960W-3030-CW-60
2	16	LEDiamoluce -TFL960W-CW-20

Operator  
 Telephone  
 Fax  
 e-Mail

### Exterior Scene 1 / Pole Positions (Coordinates List)



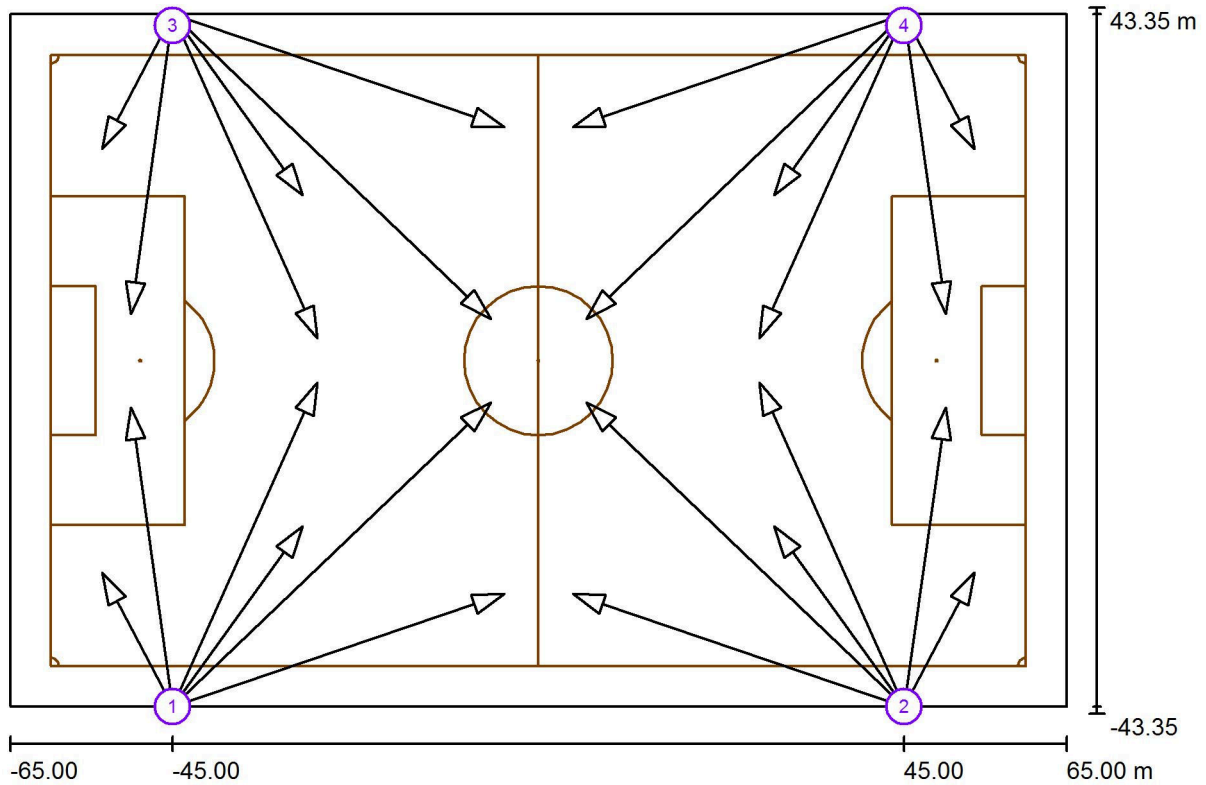
Scale 1 : 930

#### List of the Pole Positions

No.	Designation	Position [m]		
		X	Y	Z
1	Pole Position 1	-45.000	-42.500	0.000
2	Pole Position 2	45.000	-42.500	0.000
3	Pole Position 3	-45.000	42.500	0.000
4	Pole Position 4	45.000	42.500	0.000

Operator  
Telephone  
Fax  
e-Mail

### Exterior Scene 1 / Sport Luminaires (Coordinates List)



Scale 1 : 930

#### List of the Sport Luminaires

Luminaire	Index	Position [m]			Aiming Point [m]			Angle [°]	Alignment	Pole
		X	Y	Z	X	Y	Z			
LEDiamoluce-TFL960W-3030-CW-60	1	-45.000	-42.500	20.000	-53.664	-26.017	0.000	47.0	(C 0, G 0)	Pole Position 1
LEDiamoluce-TFL960W-3030-CW-60	2	45.000	-42.500	20.000	53.664	-26.017	0.000	47.0	(C 0, G 0)	Pole Position 2
LEDiamoluce-TFL960W-3030-CW-60	3	-45.000	42.500	20.000	-53.664	26.017	0.000	47.0	(C 0, G 0)	Pole Position 3
LEDiamoluce-TFL960W-3030-CW-60	4	45.000	42.500	20.000	53.664	26.017	0.000	47.0	(C 0, G 0)	Pole Position 4

Operator  
Telephone  
Fax  
e-Mail

## Exterior Scene 1 / Sport Luminaires (Coordinates List)

### List of the Sport Luminaires

Luminaire	Index	Position [m]			Aiming Point [m]			Angle [°]	Alignment	Pole
		X	Y	Z	X	Y	Z			
LEDiamoluce-TFL960W-CW-20	1	-45.000	-42.500	20.000	-4.215	-28.645	0.000	24.9	(C 0, G 0)	Pole Position 1
LEDiamoluce-TFL960W-CW-20	2	45.000	-42.500	20.000	4.215	-28.645	0.000	24.9	(C 0, G 0)	Pole Position 2
LEDiamoluce-TFL960W-CW-20	3	-45.000	42.500	20.000	-4.215	28.645	0.000	24.9	(C 0, G 0)	Pole Position 3
LEDiamoluce-TFL960W-CW-20	4	45.000	42.500	20.000	4.215	28.645	0.000	24.9	(C 0, G 0)	Pole Position 4
LEDiamoluce-TFL960W-3030-CW-60	1	-45.000	-42.500	20.000	-28.974	-20.346	0.000	36.2	(C 0, G 0)	Pole Position 1
LEDiamoluce-TFL960W-3030-CW-60	2	45.000	-42.500	20.000	28.974	-20.346	0.000	36.2	(C 0, G 0)	Pole Position 2
LEDiamoluce-TFL960W-3030-CW-60	3	-45.000	42.500	20.000	-28.974	20.346	0.000	36.2	(C 0, G 0)	Pole Position 3
LEDiamoluce-TFL960W-3030-CW-60	4	45.000	42.500	20.000	28.974	20.346	0.000	36.2	(C 0, G 0)	Pole Position 4
LEDiamoluce-TFL960W-CW-20	1	-45.000	-42.500	20.000	-5.875	-5.131	0.000	20.3	(C 0, G 0)	Pole Position 1
LEDiamoluce-TFL960W-CW-20	2	45.000	-42.500	20.000	5.875	-5.131	0.000	20.3	(C 0, G 0)	Pole Position 2
LEDiamoluce-TFL960W-CW-20	3	-45.000	42.500	20.000	-5.875	5.131	0.000	20.3	(C 0, G 0)	Pole Position 3
LEDiamoluce-TFL960W-CW-20	4	45.000	42.500	20.000	5.875	5.131	0.000	20.3	(C 0, G 0)	Pole Position 4
LEDiamoluce-TFL960W-CW-20	1	-45.000	-42.500	20.000	-50.156	-5.742	0.000	28.3	(C 0, G 0)	Pole Position 1
LEDiamoluce-TFL960W-CW-20	2	45.000	-42.500	20.000	50.156	-5.742	0.000	28.3	(C 0, G 0)	Pole Position 2
LEDiamoluce-TFL960W-CW-20	3	-45.000	42.500	20.000	-50.156	5.742	0.000	28.3	(C 0, G 0)	Pole Position 3
LEDiamoluce-TFL960W-CW-20	4	45.000	42.500	20.000	50.156	5.742	0.000	28.3	(C 0, G 0)	Pole Position 4
LEDiamoluce-TFL960W-CW-20	1	-45.000	-42.500	20.000	-27.176	-2.711	0.000	24.6	(C 0, G 0)	Pole Position 1
LEDiamoluce-TFL960W-CW-20	2	45.000	-42.500	20.000	27.176	-2.711	0.000	24.6	(C 0, G 0)	Pole Position 2
LEDiamoluce-TFL960W-CW-20	3	-45.000	42.500	20.000	-27.176	2.711	0.000	24.6	(C 0, G 0)	Pole Position 3
LEDiamoluce-TFL960W-CW-20	4	45.000	42.500	20.000	27.176	2.711	0.000	24.6	(C 0, G 0)	Pole Position 4

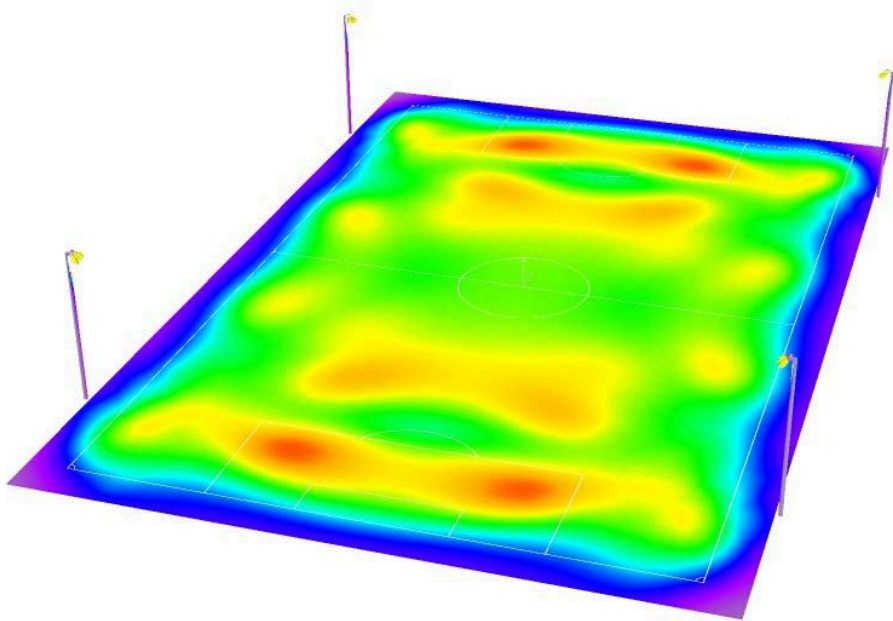
Operator  
Telephone  
Fax  
e-Mail

## Exterior Scene 1 / 3D Rendering



Operator  
Telephone  
Fax  
e-Mail

### Exterior Scene 1 / False Color Rendering

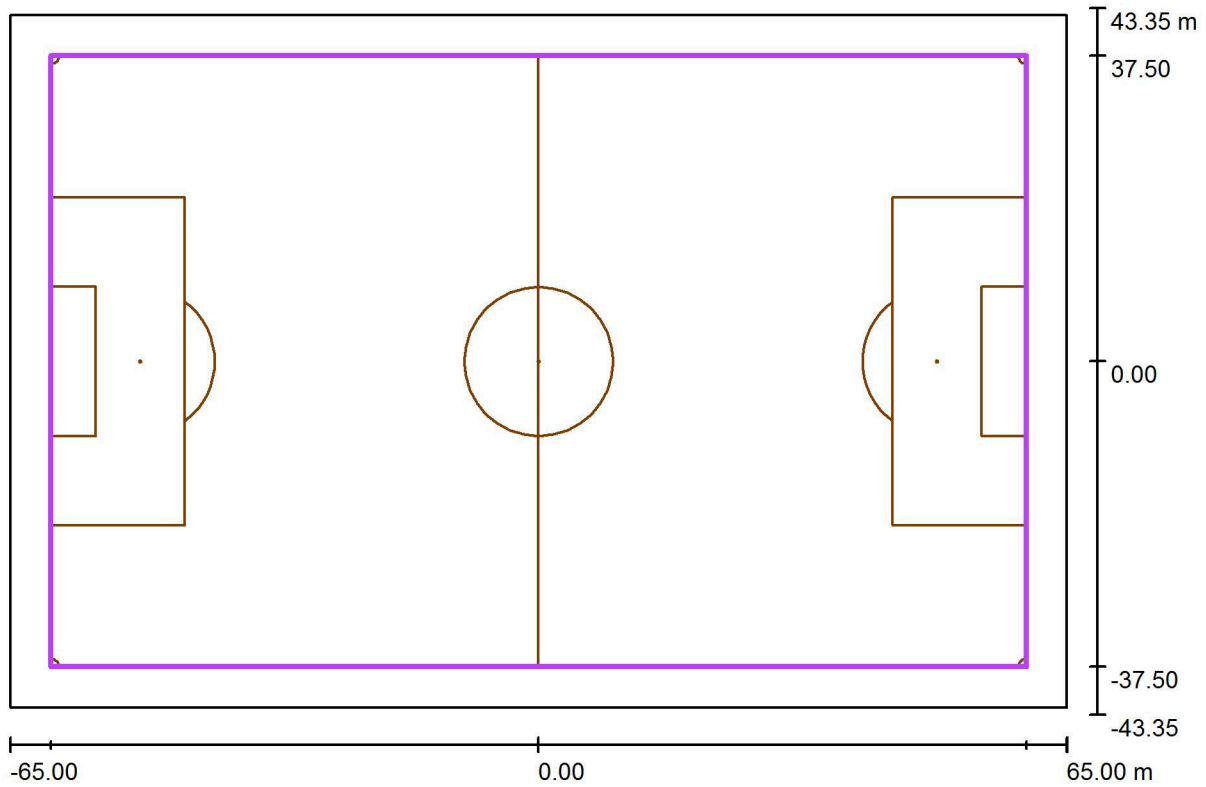


0 50 100 150 200 250 300 350 400

lx

Operator  
 Telephone  
 Fax  
 e-Mail

### Exterior Scene 1 / Soccer Field 1 Calculation Grid (PA) / Summary



Scale 1 : 930

Position: (0.000 m, 0.000 m, 0.000 m)  
 Size: (120.000 m, 75.000 m)  
 Rotation: (0.0°, 0.0°, 0.0°)  
 Type: Normal, Grid: 21 x 13 Points  
 Belongs to the following sport arena: Soccer Field 1

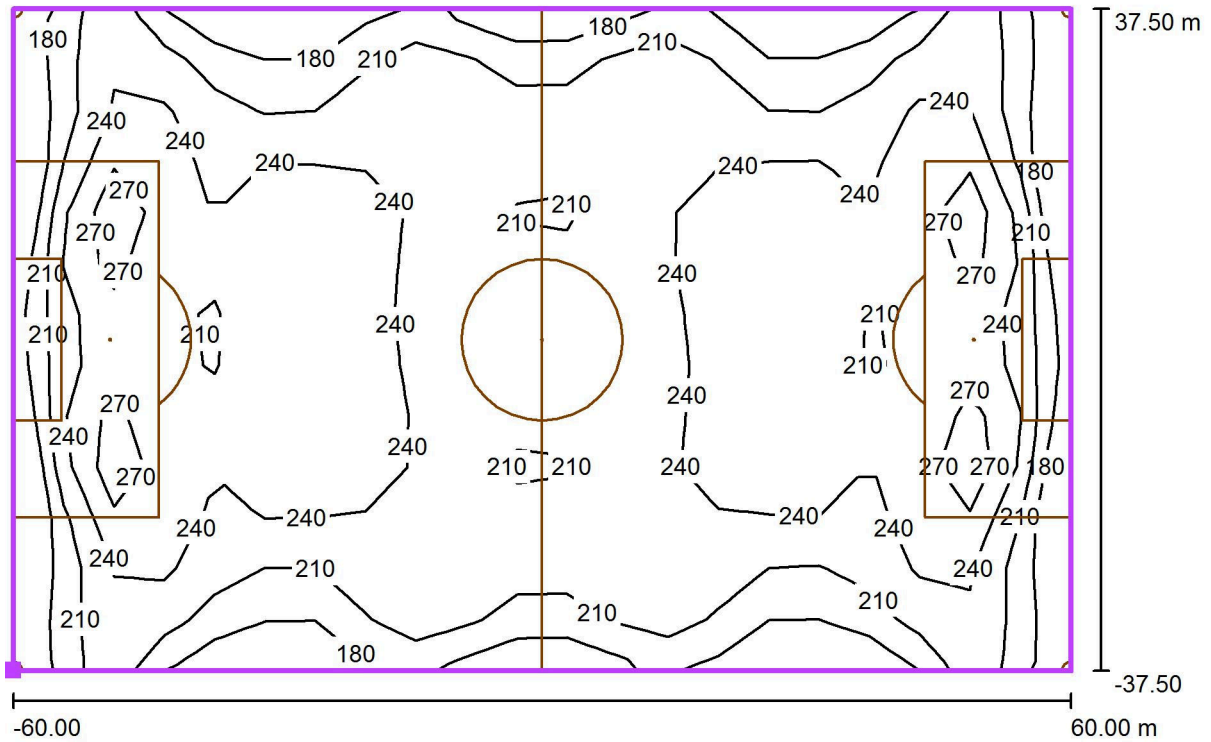
#### Results overview

No.	Type	$E_{av}$ [lx]	$E_{min}$ [lx]	$E_{max}$ [lx]	$u0$	$E_{min} / E_{max}$	$E_{h\ m} / E_m$	H [m]	Camera
1	perpendicular	226	152	302	0.70	0.50	/	0.000	/

$E_{h\ m} / E_m$  = Relationship between middle horizontal and vertical illuminance, H = Measuring Height

Operator  
 Telephone  
 Fax  
 e-Mail

**Exterior Scene 1 / Soccer Field 1 Calculation Grid (PA) / Isolines (E, Perpendicular)**



Values in Lux, Scale 1 : 858

Position of surface in external scene:  
 Marked point: (-60.000 m, -37.500 m, 0.000 m)

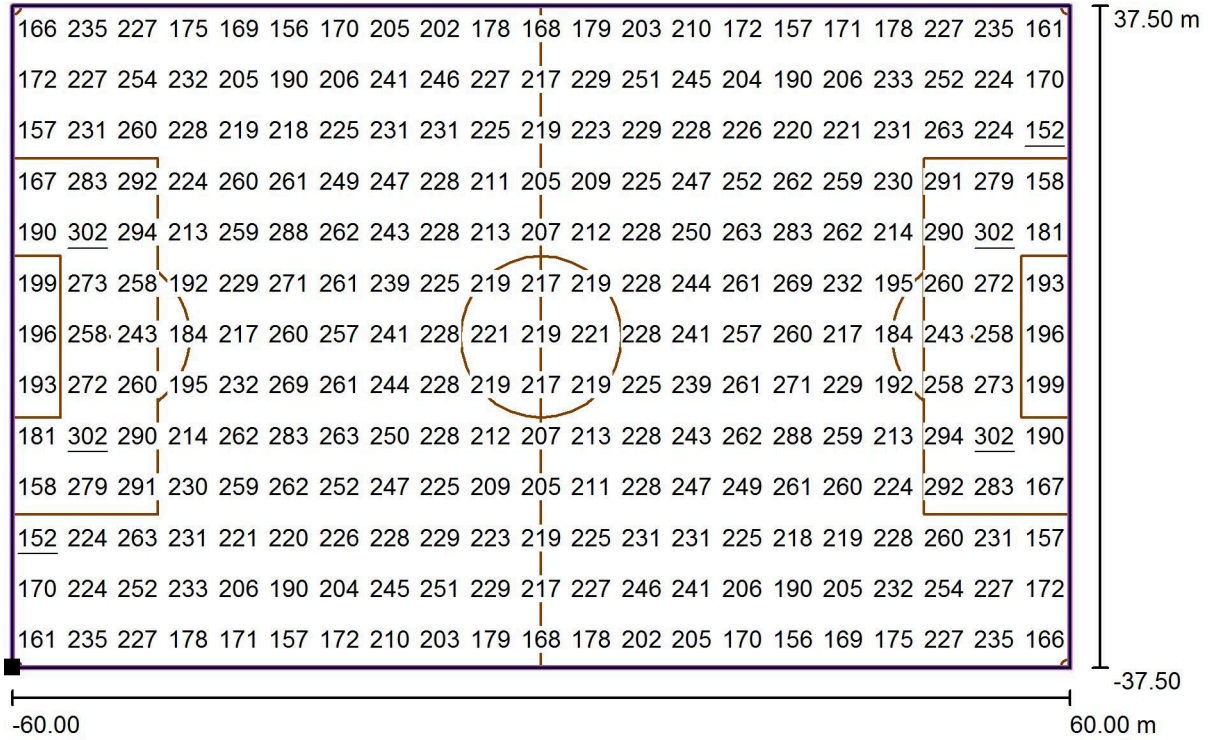


Grid: 21 x 13 Points

$E_{av}$ [lx]	$E_{min}$ [lx]	$E_{max}$ [lx]	u0	$E_{min} / E_{max}$
226	152	302	0.70	0.50

Operator  
Telephone  
Fax  
e-Mail

### Exterior Scene 1 / Soccer Field 1 Calculation Grid (PA) / Value Chart (E, Perpendicular)



Values in Lux, Scale 1 : 858

Position of surface in external scene:  
Marked point: (-60.000 m, -37.500 m, 0.000 m)



Grid: 21 x 13 Points

$E_{av}$ [lx]	$E_{min}$ [lx]	$E_{max}$ [lx]	u0	$E_{min} / E_{max}$
226	152	302	0.70	0.50