

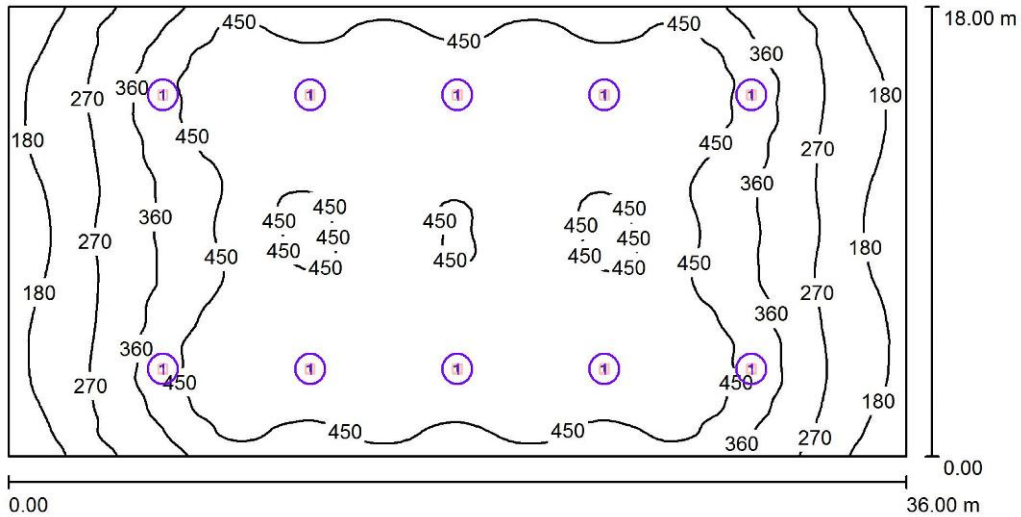
Operator
Telephone
Fax
e-Mail

Table of contents

Project 1	
Table of contents	1
Room 1	
Summary	2
Luminaire parts list	3
Luminaires (layout plan)	4
Sport Luminaires (Coordinates List)	5
GR Observer (Results Overview)	7
False Color Rendering	9
Room Surfaces	
Tennis 1 Calculation Grid (PA)	
Summary	10
Isolines (E, Perpendicular)	11
Value Chart (E, Perpendicular)	12

Operator
 Telephone
 Fax
 e-Mail

Room 1 / Summary



Height of Room: 9.000 m, Mounting Height: 7.500 m, Light loss factor: 0.80

Values in Lux, Scale 1:258

Surface	ρ [%]	E_{av} [lx]	E_{min} [lx]	E_{max} [lx]	$u0$
Workplane	/	395	90	530	0.229
Floor	29	383	125	500	0.326
Ceilings (12)	70	109	73	418	/
Walls (4)	50	147	68	273	/

Workplane:
 Height: 0.850 m
 Grid: 128 x 128 Points
 Boundary Zone: 0.000 m

Luminaire Parts List

No.	Pieces	Designation (Correction Factor)	Φ (Luminaire) [lm]	Φ (Lamps) [lm]	P [W]
1	10	TFL200W-CW-90 (1.000)	30051	30051	200.0
			Total: 300511	Total: 300510	1999.5

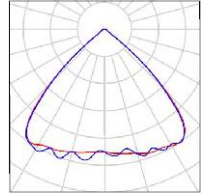
Specific connected load: $3.09 \text{ W/m}^2 = 0.78 \text{ W/m}^2/100 \text{ lx}$ (Ground area: 648.00 m²)

Operator
Telephone
Fax
e-Mail

Room 1 / Luminaire parts list

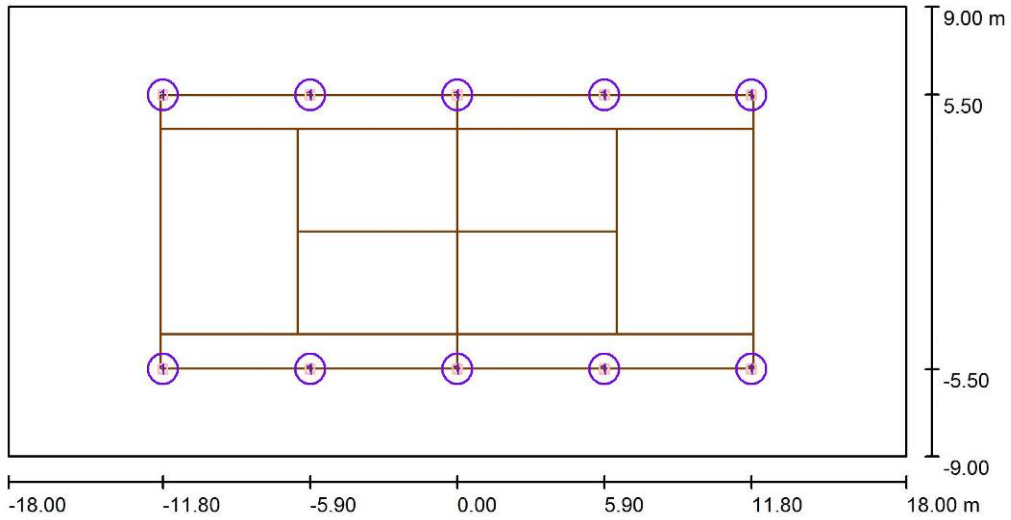
10 Pieces TFL200W-CW-90
Article No.: TFL200W-CW-90
Luminous flux (Luminaire): 30051 lm
Luminous flux (Lamps): 30051 lm
Luminaire Wattage: 200.0 W
Luminaire classification according to CIE: 100
CIE flux code: 75 97 99 100 100
Fitting: 1 x 3030 (Correction Factor 1.000).

See our luminaire catalog
for an image of the
luminaire.



Operator
Telephone
Fax
e-Mail

Room 1 / Luminaires (layout plan)



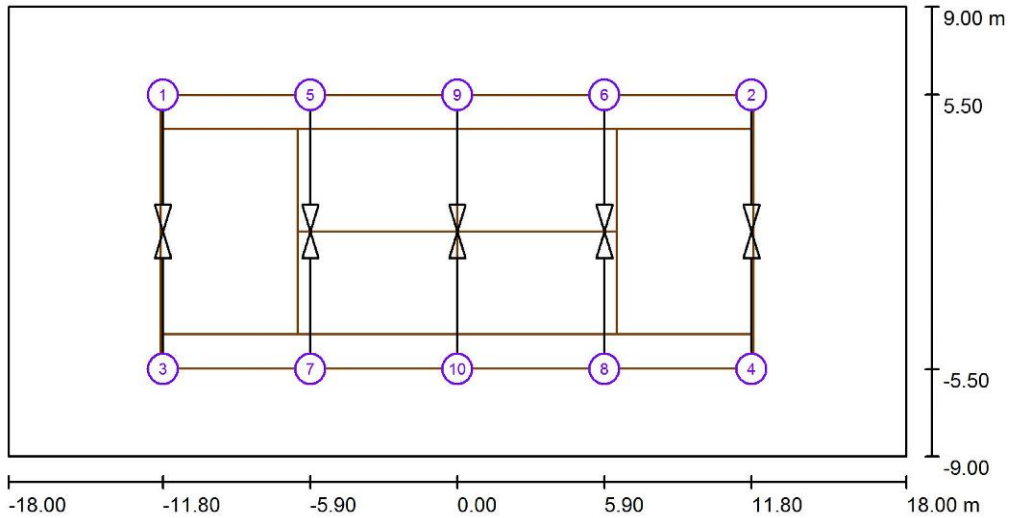
Scale 1 : 258

Luminaire Parts List

No.	Pieces	Designation
1	10	TFL200W-CW-90

Operator
 Telephone
 Fax
 e-Mail

Room 1 / Sport Luminaires (Coordinates List)



Scale 1 : 258

List of the Sport Luminaires

Luminaire	Index	Position [m]			Aiming Point [m]			Angle [°]	Alignment	Pole
		X	Y	Z	X	Y	Z			
TFL200W-CW-90	1	-11.800	5.500	7.500	-11.800	0.000	0.000	53.7	(C 90, G IMax)	/
TFL200W-CW-90	2	11.800	5.500	7.500	11.800	0.000	0.000	53.7	(C 90, G IMax)	/
TFL200W-CW-90	3	-11.800	-5.500	7.500	-11.800	0.000	0.000	53.7	(C 90, G IMax)	/
TFL200W-CW-90	4	11.800	-5.500	7.500	11.800	0.000	0.000	53.7	(C 90, G IMax)	/

Operator
 Telephone
 Fax
 e-Mail

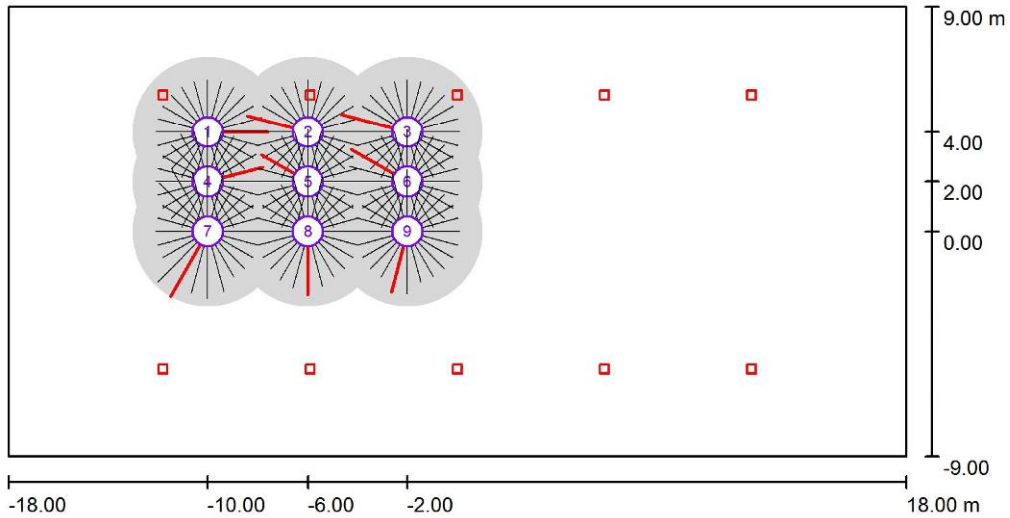
Room 1 / Sport Luminaires (Coordinates List)

List of the Sport Luminaires

Luminaire	Index	Position [m]			Aiming Point [m]			Angle [°]	Alignment	Pole
		X	Y	Z	X	Y	Z			
TFL200W-CW-90	5	-5.900	5.500	7.500	-5.900	0.000	0.000	53.7	(C 90, G IMax)	/
TFL200W-CW-90	6	5.900	5.500	7.500	5.900	0.000	0.000	53.7	(C 90, G IMax)	/
TFL200W-CW-90	7	-5.900	-5.500	7.500	-5.900	0.000	0.000	53.7	(C 90, G IMax)	/
TFL200W-CW-90	8	5.900	-5.500	7.500	5.900	0.000	0.000	53.7	(C 90, G IMax)	/
TFL200W-CW-90	9	0.000	5.500	7.500	0.000	0.000	0.000	53.7	(C 90, G IMax)	/
TFL200W-CW-90	10	0.000	-5.500	7.500	0.000	0.000	0.000	53.7	(C 90, G IMax)	/

Operator
 Telephone
 Fax
 e-Mail

Room 1 / GR Observer (Results Overview)



Scale 1 : 258

GR Observer list

No.	Designation	Position [m]			Viewing sector [°]			Slope angle	Max
		X	Y	Z	Start	End	Increment		
1	GR Observer 1	-10.000	4.000	1.500	0.0	360.0	15.0	-2.0	11 ¹⁾
2	GR Observer 2	-6.000	4.000	1.500	0.0	360.0	15.0	-2.0	12 ¹⁾
3	GR Observer 3	-2.000	4.000	1.500	0.0	360.0	15.0	-2.0	13 ¹⁾
4	GR Observer 4	-10.000	2.000	1.500	0.0	360.0	15.0	-2.0	11 ¹⁾

Operator
 Telephone
 Fax
 e-Mail

Room 1 / GR Observer (Results Overview)

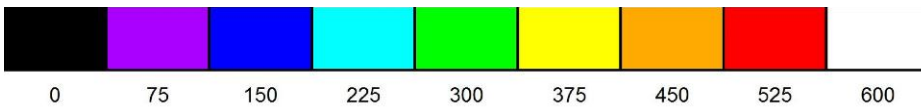
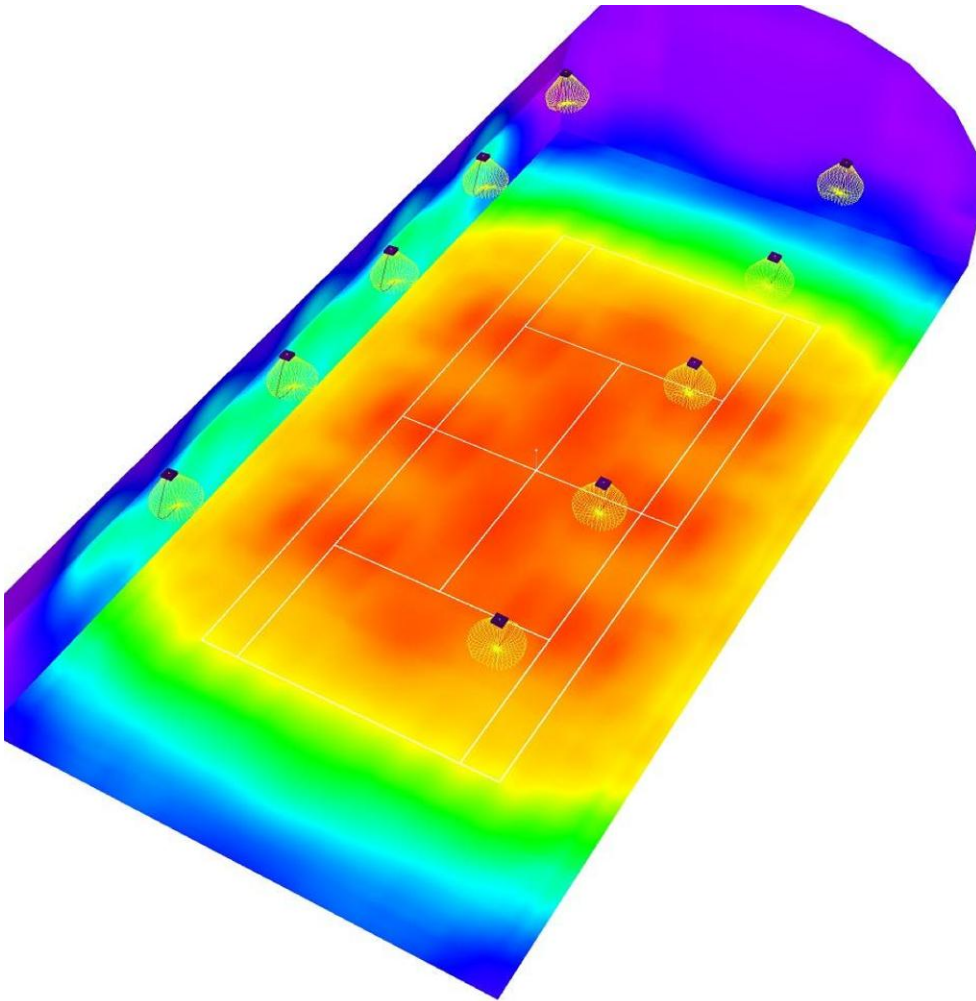
GR Observer list

No.	Designation	Position [m]			Start	Viewing sector [°]			Slope angle	Max
		X	Y	Z		End	Increment			
5	GR Observer 5	-6.000	2.000	1.500	0.0	360.0	15.0	-2.0	10 ¹⁾	
6	GR Observer 6	-2.000	2.000	1.500	0.0	360.0	15.0	-2.0	12 ¹⁾	
7	GR Observer 7	-10.000	0.000	1.500	0.0	360.0	15.0	-2.0	14 ¹⁾	
8	GR Observer 8	-6.000	0.000	1.500	0.0	360.0	15.0	-2.0	12 ¹⁾	
9	GR Observer 9	-2.000	0.000	1.500	0.0	360.0	15.0	-2.0	12 ¹⁾	

1) The equivalent veil luminance of the environment has been calculated precisely.

Operator
Telephone
Fax
e-Mail

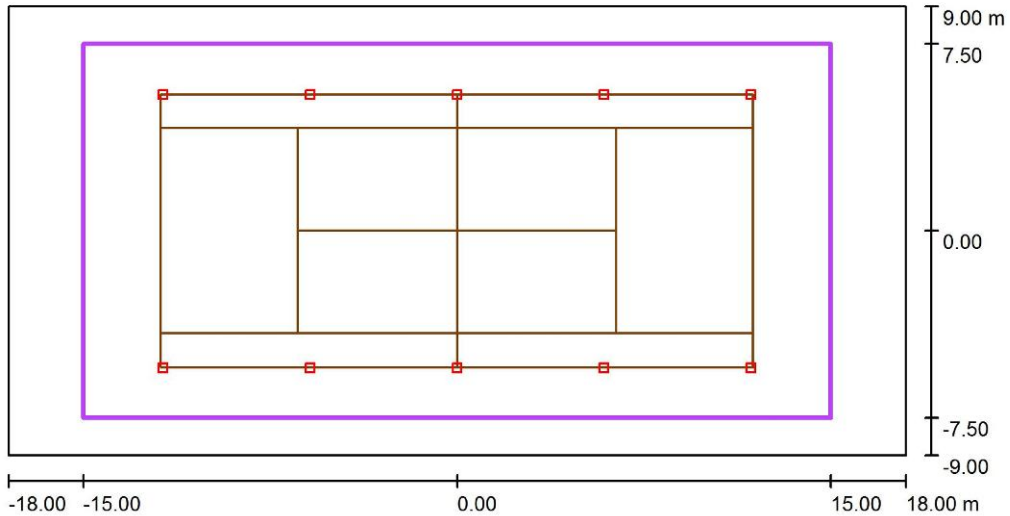
Room 1 / False Color Rendering



lx

Operator
 Telephone
 Fax
 e-Mail

Room 1 / Tennis 1 Calculation Grid (PA) / Summary



Scale 1 : 258

Position: (0.000 m, 0.000 m, 0.000 m)
 Size: (30.000 m, 15.000 m)
 Rotation: (0.0°, 0.0°, 0.0°)
 Type: Normal, Grid: 13 x 7 Points
 Belongs to the following sport arena: Tennis 1

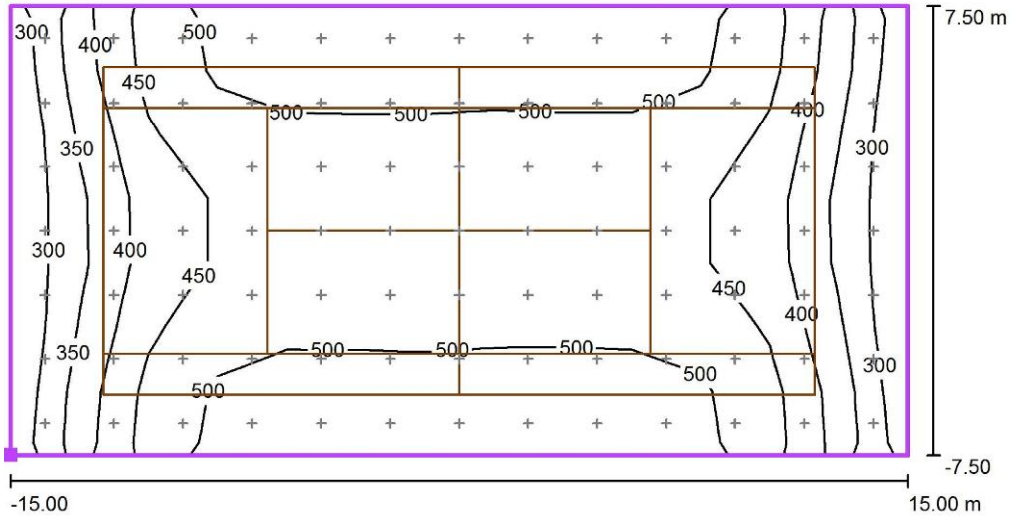
Results o verview

No.	Type	E_{av} [lx]	E_{min} [lx]	E_{max} [lx]	$u0$	E_{min} / E_{max}	$E_{h\ m} / E_m$	H [m]	Camera
1	perpendicular	450	291	526	0.65	0.55	/	1.000	/

$E_{h\ m} / E_m$ = Relationship between middle horizontal and vertical illuminance, H = Measuring Height

Operator
 Telephone
 Fax
 e-Mail

Room 1 / Tennis 1 Calculation Grid (PA) / Isolines (E, Perp endicular)



Values in Lux, Scale 1 : 215

Position of surface in room:

Marked point: (-15.000 m, -7.500 m, 0.000 m)

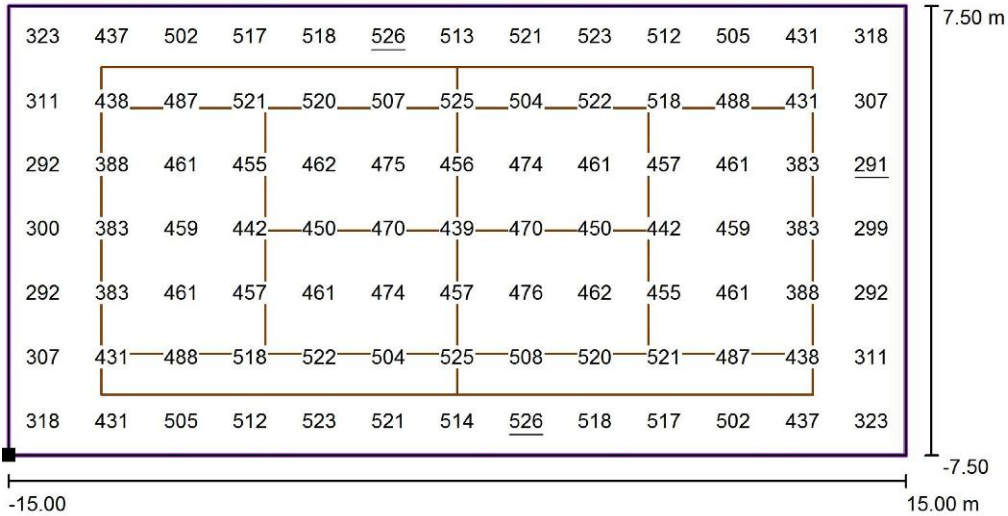


Grid: 13 x 7 Points

E_{av} [lx]	E_{min} [lx]	E_{max} [lx]	u_0	E_{min} / E_{max}
450	291	526	0.65	0.55

Operator
Telephone
Fax
e-Mail

Room 1 / Tennis 1 Calculation Grid (PA) / Value Chart (E, Perpendicular)



Values in Lux, Scale 1 : 215

Position of surface in room:
Marked point: (-15.000 m, -7.500 m, 0.000 m)



Grid: 13 x 7 Points

E_{av} [lx]	E_{min} [lx]	E_{max} [lx]	u_0	E_{min} / E_{max}
450	291	526	0.65	0.55